

GUMBYERE



Materials: 1 skein Tilly Tomas Pure & Simple in Gloxinia (100% spun silk, 100 grams/260 yds)

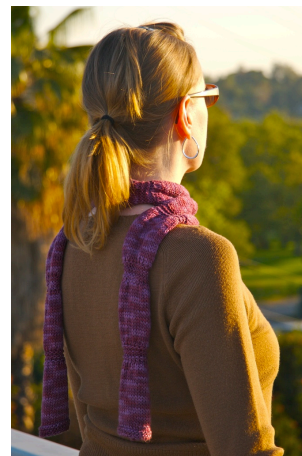
Size US7 (4.5mm) straights or circular needle
Tapestry Needle

Gauge (before blocking): 24 stitches and 26 rows = 4 inches

Size: 7 inches wide (stretched flat) and 55 inches long

Abbreviations

- RS = right side row
- WS = wrong side row
- CO = cast on
- sts = stitches
- k = knit
- p = purl
- sl = slip 1 stitch purlwise
- k2tog = knit 2 together
- kfb = knit into the front and back



Pattern

CO 40 sts

knit 4 rows in garter stitch (knit all rows)

knit 24 rows (about 4 inches) in stockinette (k on RS, p on WS)

**** on next RS row: sl1, k2tog across row to last stitch, k1**

knit 5 rows in garter stitch, slipping first stitch of row purlwise

next row (RS): sl1, kfb across row to last stitch, k1

knit 18 rows stockinette (about 3 inches)

repeat from ** to *almost* desired length

on last repeat from **, knit 24 rows stockinette (instead of 18)

finish by knitting 4 rows in garter stitch

bind off

Block as directed by yarn manufacturer, pinning or stretching widthwise to minimize rolling.

This pattern can be widely varied with fiber, gauge, and proportion of stockinette sections to garter stitch sections!



© 2007 Jillian Kathleen Neary and sknitty.com. All Rights Reserved. This PDF document (pattern, images, text, layout design) may be freely distributed in any medium as long as the pattern, images, text, layout design, and this copyright notice remain intact and no profit is made from its distribution or use.